

# A Guide to Conservation Groups In Centre County 2010



414 Holmes Ave., Suite 4  
Bellefonte, PA 16823  
Phone: (814) 355-6817  
Fax: (814) 355-8696  
[www.co.centre.pa.us/conservation](http://www.co.centre.pa.us/conservation)



420 Holmes St., Room 340  
Bellefonte, PA 16823  
Phone: (814) 355-6791  
Fax: (814) 355-8661  
[www.co.centre.pa.us/planning](http://www.co.centre.pa.us/planning)

*"The environment is where we all meet; where we all have a mutual interest; it is the one thing that all of us share. It is not only a mirror of ourselves, but a focusing lens on what we can become..."*

- Lady Bird Johnson

*"Today's mighty oak is just yesterday's nut that held its ground."*

- Anonymous

*"We all moan and groan about the loss of the quality of life through the destruction of our ecology, and yet every one of us, in our own little comfortable ways, contributes daily to that destruction. It's time now to awaken in each one of us the respect and attention our beloved Mother deserves."*

- Ed Asner, Actor

*"One touch of nature makes the whole world kin."*

-Shakespeare

*"Sooner or later, we sit down to a banquet of consequences."*

-Robert Louis Stevenson

*"The nation behaves well if it treats the natural resources as assets which it must turn over to the next generation increased, and not impaired, in value."*

-Theodore Roosevelt

## How to Contact your Lawmakers:

### Washington

#### U.S. Senate

U.S. Senator Robert P. Casey  
511 Dirksen Senate Off. Bldg.  
Washington, DC 20510  
202-224-6324  
<http://www.casey.senate.gov>

U.S. Senator Arlen Specter  
711 Hart Senate Office Bldg.  
Washington, DC 20510  
202-224-4254  
e-mail [arlen\\_specter@specter.senate.gov](mailto:arlen_specter@specter.senate.gov)

U.S. House  
[www.house.gov](http://www.house.gov)

### Harrisburg

#### State Government

Governor Edward G. Rendell  
225 Main Capitol Building  
Harrisburg, PA 17120  
717-787-2500  
<http://www.governor.state.pa.us/>

State General Assembly  
[www.legis.state.pa.us](http://www.legis.state.pa.us)

Centre County Commissioners  
814-355-6700  
[www.co.centre.pa.us](http://www.co.centre.pa.us)

~ ~ ~ ~

## Who are your Representatives?

Call Centre County Elections and Voter Registraton at 355-6703 to determine who your representatives are. If you give them your name and address they will identify your:

Township \_\_\_\_\_

Ward \_\_\_\_\_

Precinct \_\_\_\_\_

Pennsylvania House Representative \_\_\_\_\_

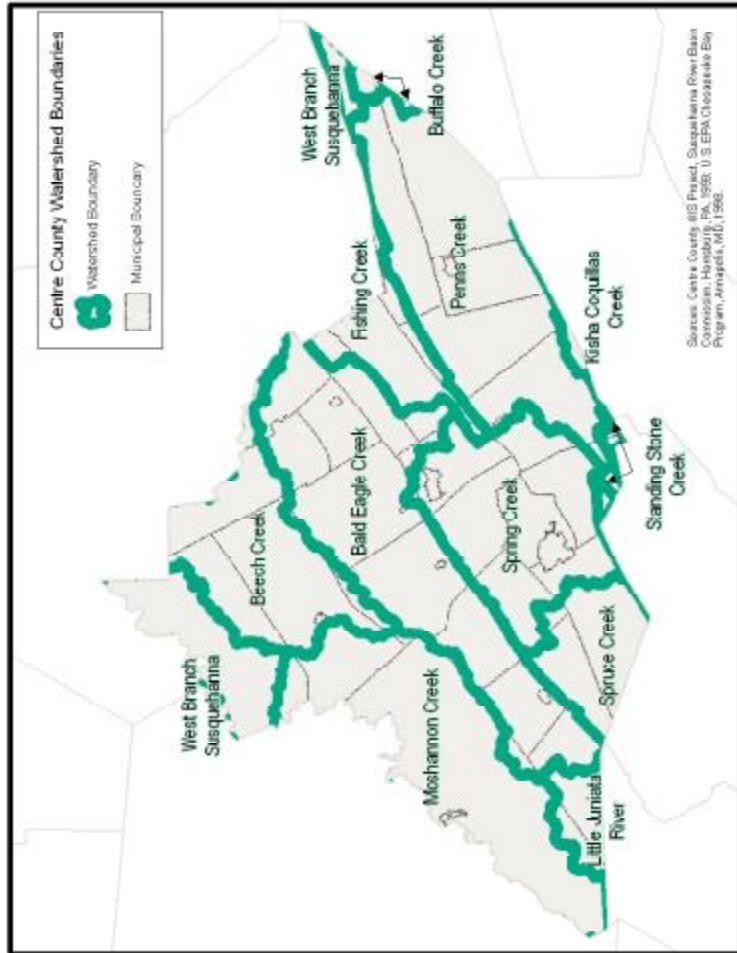
Pennsylvania Senator \_\_\_\_\_

U.S. House Disrict Representative \_\_\_\_\_

U.S. Senators \_\_\_\_\_

You may stop in any politician's office to voice your concerns. Office personnel will take your name and address and e-mail your opinions to the proper place. Remember — politicians like happy constituents. They want to please YOU! Make your voices heard!

# CENTRE COUNTY WATERSHED MAP



Centre County, at 1,115 square miles, is the fifth largest county in the Commonwealth of Pennsylvania. The county, named because it is situated at the geographic center of the state, is divided into thirty-six municipalities that are grouped into seven planning districts. Environmental concerns in the county range from water quality to land use, from agriculture issues in the east to mining issues in the north. In addition, the environmental impact of the urbanization of the Centre region is a growing concern among our citizens.

There are a number of active conservation organizations in the County comprised of individuals who are dedicated to preserving and protecting our environment. This booklet is intended to serve as a guide to those groups. We have made every effort to include all organizations that are active in the county and we apologize for any omissions.

All of these groups welcome newcomers. Most of them provide volunteer opportunities for individuals of various ages. They all can use your support for their activities. We hope that through this publication you will find a group that interests you. Our goal is to create stewards of the earth in Centre County. We encourage individuals to take responsibility for their own actions and by doing so to serve as models for others.

Compiled in 2009 by:  
Ann Donovan, Watershed Specialist  
Centre County Conservation District

~  
Beth Rider, Environmental Planner and  
Mary Wheeler, Secretary  
Centre County Planning Office

~  
Maps created by:  
Centre County Planning Office

The Photo on the front cover is Penns Valley looking east from Madisonburg towards Rebersburg and was provided by the Centre County Planning Office.

**TABLE OF CONTENTS**

Arboretum at Penn State ..... 1  
 Bald Eagle Watershed Association ..... 2  
 Beech Creek Watershed Association ..... 3  
 Center for Sustainability ..... 4  
 Center for Watershed Stewardship ..... 5  
 Centre County Agricultural Land Preservation Board ..... 6  
 Centre County Bass Clubs ..... 7  
 Centre County Farmland Trust ..... 8  
 Centre Co. PA Senior Environmental Corps ..... 9  
 Centre County Recreation & Greenway ..... 10  
 Centre Region Parks & Recreation ..... 11  
 Chesapeake Bay Foundation ..... 12  
 ClearWater Conservancy ..... 13  
 The Conservation Fund— PA Office ..... 14  
 Ducks Unlimited ..... 15  
 Eco-Action ..... 16  
 Headwaters Resource Conservation & Dev. Council ..... 17  
 Keystone Trails Association ..... 18  
 League of Women Voters ..... 19  
 Lumber Heritage Region of PA, Inc. .... 20  
 Moshannon Creek Watershed Coalition ..... 21  
 Mount Nittany Conservancy ..... 22  
 The Nature Conservancy—Pennsylvania Chapter ..... 23

**Agencies Serving You**

***To report illegal Dumping:***

Centre County Solid Waste Authority: 814-238-7005

***For information about recycling:*** 814-238-6649

***or*** 800-605-6649

***To report water pollution:***

Pa. Fish & Boat Commission: 814-359-5250

Dept. of Environmental Protection:

Emergency Hotline 800-541-2050

***To report toxic chemical and oil spills:*** 800-424-8802

***To report a forest fire:***

814-234-0234

***or*** 911

Bureau of State Parks:

800-637-2757

Bureau of Forestry:

814-643-2340

Department of Environmental Protection:

Main

570-327-3636

Bureau of Mining & Reclamation (Moshannon):

814-342-8200

Centre County Conservation District:

814-355-6817

Centre County Planning Office:

814-355-6791

Centre County Commissioners:

814-355-6700

PA Game Commission (North Central Regional office):

570-398-3423

U.S. Fish and Wildlife Service:

814-234-4090

USDA-Natural Resources Conserv. Serv.

570-726-3196

Clinton/Centre Counties office (Mill Hall)

814-355-2447

Cooperative Extension Service:

814-355-4897

PA Fish & Boat Commission:

814-359-5100

## Woodland Owners of Centre County

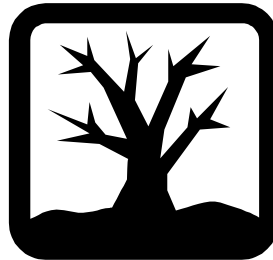
P.O. Box 1156  
State College, PA 16804  
814-237-1401  
e-mail: foreststew@aol.com  
814-355-5949  
e-mail: RX7@psu.edu

~ ~ ~ ~

The Woodland Owners of Centre County is one of 22 local Forest Landowners Associations in Pennsylvania. It is an organization for forest and non-forest landowners interested in preserving or conserving forestland in a sustainable manner.

You should join WOCC IF YOU:

- love forests;
- care about the environment;
- want to learn about wildlife and biodiversity;
- want to learn more about products of the woods;
- enjoy camaraderie;
- want to learn about the best management practices for your own forestland;
- like both indoor and outdoor programs.



## TABLE OF CONTENTS

Nittany Grotto.....	24
Nittany Valley Longbeards / Nat'l Wild Turkey Fed .....	25
Penn State Chapter of the Wildlife Society .....	26
Penns Valley Conservation Association.....	27
Pennsylvania Association for Sustainable Agriculture... 28	
Pennsylvania Association of Conservation Districts, Inc.29	
Pennsylvania Federation of Sportsman's Clubs .....	30
Pennsylvania Native Plant Society .....	31
The Pennsylvania Wildlife Federation .....	32
Ridge and Valley Outings Club.....	33
Ruffed Grouse Society .....	34
Sierra Club, Moshannon Group.....	35
Spring Creek Watershed Commission.....	36
Spring Creek Watershed Community .....	37
State College Bird Club.....	38
Susquehanna River Basin Commission.....	39
10,000 Friends of Pennsylvania.....	40
Trout Unlimited.....	41
Woodland Owners of Centre County .....	42
Agencies Serving You.....	43
Centre County Watershed Map .....	44
How to Contact your Lawmaker .....	45
Who are your Representatives.....	45

# Centre County Public Lands Map



**Trout Unlimited**  
www.tu.org

Spring Creek Chapter  
1018 Metz Avenue  
State College, PA 16801  
814-234-8851  
www.springcreektu.org

Wood Duck Chapter  
125 North 11th Street  
Philipsburg, PA 16866  
814-342-3844

Lloyd Wilson Chapter  
14 Valley View Road  
Lock Haven, PA 17745  
570-748-7242  
http://www.lwtu.org/

Penns Creek Chapter  
600 Maple Avenue  
Lewistown, PA 17044  
717-242-0119



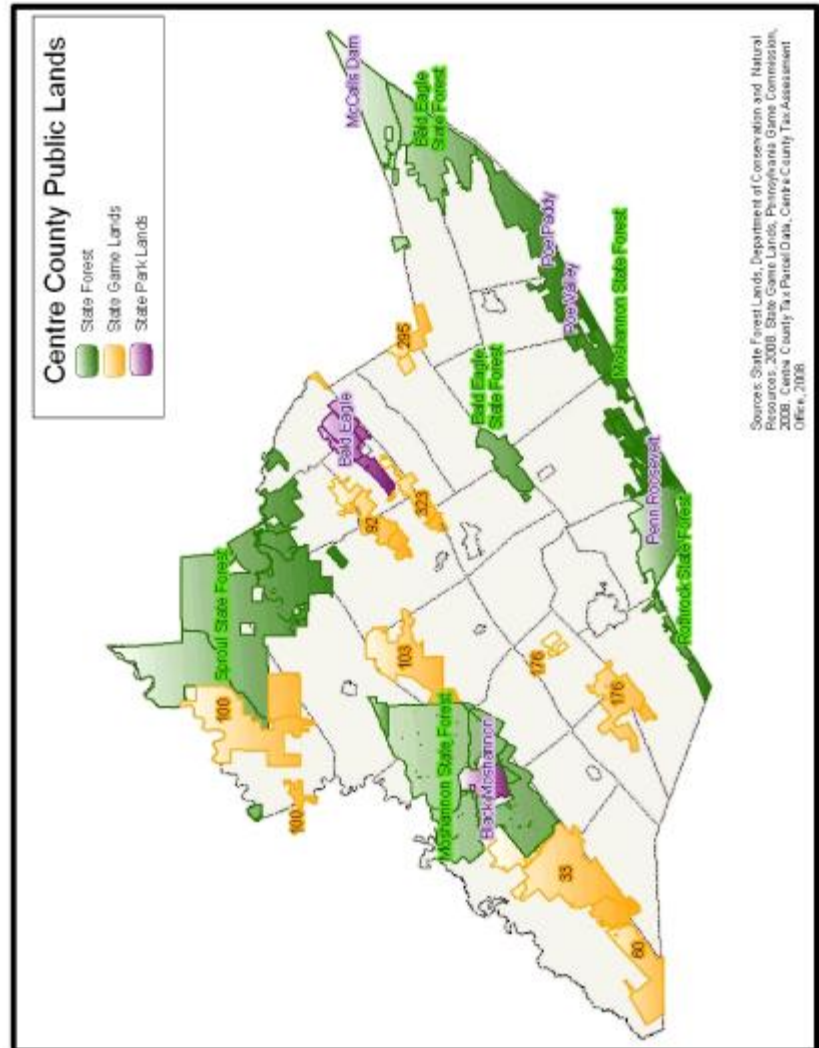
Trout Unlimited's mission is to conserve, protect and restore North America's trout and salmon fisheries and their watersheds.

TU accomplishes this mission on local, state and national levels with an extensive and dedicated volunteer network. TU's national office, based outside Washington, D.C., and its regional offices employ professionals who testify before Congress, publish a quarterly magazine, participate in federal legal proceedings, and work with the organization's 125,000 volunteers in 500 chapters nationwide to keep them active and involved in conservation issues.

The Spring Creek Chapter of TU has been involved in stream assessments and restoration on Spring Creek.

The Wood Duck Chapter has installed acid mine treatment sites on Cold Stream Dam and at Glass City and they maintain a fish hatchery at Glass City.

The Lloyd Wilson Chapter sponsored the Foster Joseph Sayers Lake Watershed Assessment.



## 10,000 Friends of Pennsylvania

1315 Walnut Street, Suite 1329  
Philadelphia, PA 19107  
215-985-3201  
www.10000friends.org



~ ~ ~ ~

*10,000 Friends* is an alliance of organizations and individuals committed to promoting land use policies and actions that will enable Pennsylvania to strengthen its diverse urban, suburban and rural communities.

*10,000 Friends* seeks growth and development that will support the economic and social viability of Pennsylvania's cities and towns, conserve fiscal resources, and protect our state's exceptional natural landscapes, environmental quality and heritage resources.

## The Arboretum at Penn State

The Pennsylvania State University  
336 Forest Resources Building  
University Park PA 16802-3604  
814-865-9118  
e-mail: Kathleen K. Reeder at [kkr1@psu.edu](mailto:kkr1@psu.edu)  
[www.arboretum.psu.edu](http://www.arboretum.psu.edu)



"A view into the Arboretum's overlook pavilion - opening in 2009."

~ ~ ~ ~

The Arboretum encompasses 370 acres of undeveloped land adjacent to central campus that has been set aside by the University for conservation and education purposes. One of the principal goals of the Arboretum is to promote responsible land stewardship. They sponsored the development of the 1.3-mile Bellefonte Central Rail Trail that spans the width of the Arboretum, and their current priorities include protection of the University well fields and ecological restoration of the old-growth Hartley Wood that the Arboretum shares with Sunset Park in the College Heights development in State College, Pennsylvania.

## Bald Eagle Watershed Association

PO Box 42  
Milesburg, PA 16853  
814-355-3583

[www.baldeaglewatershed.com](http://www.baldeaglewatershed.com)



~ ~ ~ ~

The mission of the Bald Eagle Watershed Association (BEWA) is to protect the quality and the beauty of the Bald Eagle Creek including its feeder streams and to enhance life in the Bald Eagle Watershed. They meet on the fourth Wednesday of every month @ 7 p.m. at the Milesburg Borough Building. For more information please call the number above.

## Susquehanna River Basin Commission

1721 N. Front Street  
Harrisburg, PA 17102  
717-238-0423  
[www.srbc.net](http://www.srbc.net)

### Susquehanna River Basin Commission

*A water management agency serving the Susquehanna River Watershed*

~ ~ ~ ~

The mission of the Susquehanna River Basin Commission (SRBC), is to enhance public welfare through comprehensive planning water supply allocation, and management of the water resources of the Susquehanna River Basin.

The Susquehanna River Basin Commission goals are:

1. to be responsible to water resource management needs of SRBC's signatory members;
2. to provide excellent service to the public;
3. to coordinate management of interstate water resources and serve as an effective forum for resolution of water resource issues and controversies within the basin;
4. to be a leader in issues concerning the conservation, utilization, allocation, development, and management of water resources within the Susquehanna River Basin;
5. to encourage excellence in SRBC staff by affording opportunities for professional growth and development and by providing a stimulating work environment for all Commission employees; and
6. to provide public information and education about the water resources of the basin.

*If you live in Centre County, you live in the Susquehanna River Basin.*



## State College Bird Club

[www.scbirdcl.org](http://www.scbirdcl.org)



~ ~ ~ ~

For over 50 years, the State College Bird Club has provided a forum in which people can gather to learn more about birds and how we impact the natural worlds. The club continues its conservation role in the rapidly-urbanizing community of the Centre Region. In addition to programs informing attendees about birds, the club also sponsors programs that address conservation issues. See the WEBSITE for more information.

## Beech Creek Watershed Association

P.O. Box 286

Mill Hall, PA 17751

<http://www.beechcreekwatershed.com/>



~ ~ ~ ~

**The mission of the BCWA is to protect the quality and the beauty of Beech Creek and to enhance life in the Beech Creek Watershed by:**

- reclaiming and controlling areas of the Watershed affected by acid mine drainage (AMD);
- promoting wise land use and management of natural resources in the Watershed;
- protecting and enhancing open space and natural areas in the Watershed and providing opportunities for the enjoyment of these natural areas;
- promoting awareness and appreciation of environmental issues through education so the community can make sound choices for a sustainable, ecologically healthy future.

This group meets on the third Monday of the month at 7:00 p.m. at the Beech Creek Municipal Building.

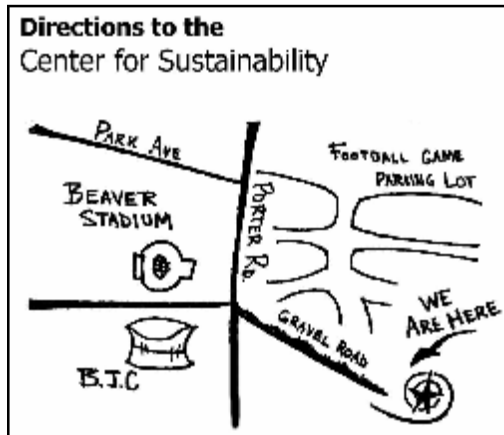
## Center for Sustainability

Penn State Department of Architectural Engineering  
104 Engineering Unit A  
University Park, PA 16802  
814-863-2079  
www.cfs.psu.edu/



~ ~ ~ ~

Penn State's Center for Sustainability is an innovative, interdisciplinary program of collaborative research and instruction focusing on ecological design and environmental education. Founded in 1995, the Center is dedicated to the responsible stewardship of our rich but limited natural endowment.



## Spring Creek Watershed Community

c/o ClearWater Conservancy  
2555 North Atherton Street  
State College, PA 16803  
814-237-0400  
www.springcreekwatershed.org



~ ~ ~ ~

The Spring Creek Watershed Community promotes actions that protect and enhance the quality of life, environment and the economy throughout the watershed while maintaining and improving the high quality of Spring Creek and its tributaries.

### Strategic Goals

1. Increase public awareness of watershed issues through education and communication,
2. Develop a vision for the future and implement it,
3. Maximize involvement and participation in Spring Creek Watershed Community,
4. Measure watershed quality and set goals for improvement,
5. Increase intergovernmental and inter-organizational cooperation, and
6. Promote business and economic development actions that support the mission of the Spring Creek Watershed Community.

The Spring Creek Watershed Coordinating Committee meets the third Tuesday of each month @ 7:30 a.m. at the Patton Township Building.

## Spring Creek Watershed Commission

*Interim Contact:*

c/o ClearWater Conservancy  
2555 North Atherton Street  
State College, PA 16803  
814-237-0400

~ ~ ~ ~



The Spring Creek Watershed Commission consists of elected representatives from the fourteen (14 ) municipalities within the Spring Creek Watershed. They have sponsored watershed wide projects such as stormwater management (Act 167), the Spring Creek Watershed Plan, and the Nittany and Bald Eagle Greenways Study.

The Spring Creek Watershed Commission meets the 3rd Wednesday of each month @ 7:00 p.m. at the Spring Township Building.

## Center for Watershed Stewardship

The Pennsylvania State University  
227 East Calder Way  
University Park, PA 16802  
814-865-3334  
[www.larch.psu.edu/watershed](http://www.larch.psu.edu/watershed)

~ ~ ~ ~

### Center for Watershed Stewardship

*A partnership of the Heinz Endowments and the Pennsylvania State University*

The Center for Watershed Stewardship is a new initiative at Penn State, funded by a major grant from the Heinz Endowments and housed jointly in the Department of Landscape Architecture and the School of Forest Resources and is in association with the Ecology program. The Center's purpose is to create the next generation of watershed professionals by combining interdisciplinary capabilities with strong disciplinary bases in a community-oriented context. The Center's programs include graduate studies in watershed stewardship and a continuing education program of short courses for natural resources professionals and community leaders.



**The Centre County Agricultural Land  
Preservation Board**

Centre County Planning Office  
420 Holmes Street  
Bellefonte, PA 16823  
814-355-6791

Norman K. Lathbury, Coordinator  
e-mail: [nklathbury@co.centre.pa.us](mailto:nklathbury@co.centre.pa.us)  
[www.co.centre.pa.us/planning](http://www.co.centre.pa.us/planning)

~ ~ ~ ~

The mission of the Agricultural Land Preservation Board is to preserve the county’s prime agricultural land. The nine member board was established in 1990 and has purchased Agricultural Conservation Easements on 37 farms totaling over 6,024 acres. Farm owners must complete an application in order to be considered for an easement purchase.

Funding for easement purchases comes from the Bureau of Farmland Preservation, Centre County Government, and the federal Farm and Ranchland Protection Program. The total amount of funds used to purchase Agricultural Conservation Easements in Centre County exceeds 12 million dollars.

**Sierra Club, Moshannon Group**

P.O. Box 513  
State College, PA 16804  
[www.pennsylvania.sierraclub.org/moshannon](http://www.pennsylvania.sierraclub.org/moshannon)  
Gary Thornbloom, Chair  
[bearknob@verizon.net](mailto:bearknob@verizon.net)  
(814)-353-3466

~ ~ ~ ~

The Centre County Pennsylvania Sierra Club chapter, the Moshannon Group, is a dedicated grassroots environmental organization, inspired by and pursuing John Muir’s goals:

- to explore, enjoy, and protect the wild places of the Earth;
- to practice and promote the responsible use of the Earth’s ecosystems and resources;
- to educate and enlist humanity to protect and restore the quality of the natural and human environment.

This group meets the third Tuesday of each month at various locations. Check their website for more details.



## **Ruffed Grouse Society**

451 McCormick Road  
Coraopolis, PA 15108  
1-888-Join RGS  
412-262-4044

e-mail: [rgs@ruffedgrousesociety.org](mailto:rgs@ruffedgrousesociety.org)  
[www.ruffedgrousesociety.org](http://www.ruffedgrousesociety.org)



~ ~ ~ ~

### **Mission Statement**

Established in 1961 the Ruffed Grouse Society (RGS) is the one international wildlife conservation organization dedicated to promoting conditions suitable for ruffed grouse, American woodcock and related wildlife to sustain our sport hunting tradition and outdoor heritage.

## **Centre County Bass Clubs**

~ ~ ~ ~

### **Bald Eagle State Park Focus Group**

Contact Person: Park Manager  
149 Main Park Road  
Howard, PA 16841  
(814)-625-2775  
e-mail: [baldeaglesp@state.pa.us](mailto:baldeaglesp@state.pa.us)

### **Centre County Bassmasters**

Contact Person: Terry Rogers, President  
(814)-355-8788  
(c) (814)-933-7001  
e-mail: [trwoodshop@comcast.net](mailto:trwoodshop@comcast.net)  
<http://www.angelfire.com/pa3/ccbassmasters/>

### **Hunters Run Bassmaster**

Scott Laukhuff, President  
(570) 962-3431  
e-mail: [imbassn@embarqmail.com](mailto:imbassn@embarqmail.com)

### **Nittany Bassmasters of Central PA**

214 Harvard Road  
Port Matilda, PA 16870-7307



The goals of the Centre County Bass Clubs include the promotion of bass angling.

**The Centre County Farmland Trust**

c/o Centre County Planning Office  
420 Holmes Street  
Bellefonte, PA 16823  
814-355-6791

Norman K. Lathbury, Coordinator  
e-mail: [nklathbury@co.centre.pa.us](mailto:nklathbury@co.centre.pa.us)  
[www.co.centre.pa.us/planning](http://www.co.centre.pa.us/planning)

~ ~ ~ ~

The Centre County Farmland Trust is a publicly supported, tax exempt, nonprofit organization [501(c)(3)] authorized by the Internal Revenue Service and the Pennsylvania Department of State to accept, hold and administer conservation easements. Governed by a 15 member Board of Trustees established in 1996, the Trust preserved its first farm, consisting of 147 acres, in May of 2004. Since then, six more farms have been permanently protected totaling 700 acres. The Board is working to preserve three farms in 2010 with nine farms on the waiting list totaling nearly 1,600 acres.

Land owners wishing to donate a conservation easement as a charitable gift must meet the minimum criteria established by the Internal Revenue Service and the Trust. Funding comes from annual memberships of individuals, families and corporate sponsors. Grants to support specific projects have come from the Centre County Community Foundation, The Hamer Foundation, The Bureau of Farmland Preservation, Wal-Mart and Sam’s Club. Technical support comes from the Land Trust Alliance and the Pennsylvania Land Trust Association.

**Ridge and Valley Outings Club**

Bill Mertens, President  
e-mail: [monoprint@gmail.com](mailto:monoprint@gmail.com)  
<http://rvoc.centreconnect.org/>

~ ~ ~ ~

**“. . .to promote the enjoyment of the natural and cultural environment by non-competitive outings events.”**

The Ridge & Valley Outings Club (RVOC) leads weekly Outings into State Forests, Parks and Natural Areas. RVOC provides a social framework for planning and enjoying outdoor recreation in Central Pennsylvania, leading after-work hikes on Tuesday nights (starting at 6:00 p.m.) and also weekend hikes locally and further away, occasionally with other hiking groups.



All outings and activities are open to the public and are planned for most ages and abilities.

**Casual Hikers of RVOC**

Casual Hikers of RVOC takes weekly evening hikes that are designed to be shorter and more leisurely than the Tuesday night RVOC hikes. Details are posted via the RVOC listserv and at <http://shorthikers.ning.com>

## The Pennsylvania Wildlife Federation

2426 North 2<sup>nd</sup> Street  
Harrisburg, PA 17110  
e-mail: [info@pawildlife.org](mailto:info@pawildlife.org)  
[www.pawildlife.org](http://www.pawildlife.org)



~ ~ ~ ~

The mission of the Pennsylvania Wildlife Federation is to educate Pennsylvanians about our environment and inspire them to protect and conserve our natural resources.

## Centre County Pa Senior Environmental Corps at ClearWater



c/o ClearWater Conservancy  
2555 North Atherton Street  
State College, PA 16804  
(814) 237-0400

[www.clearwaterconservancy.org/links.htm](http://www.clearwaterconservancy.org/links.htm)

The mission of CCPaSEC is to develop and support teams of senior citizens who gather and publish data on the quality of water in the streams of Centre County. Through public outreach, with the assistance of the ClearWater Conservancy and the Centre County Conservation District, CCPaSEC seeks to keep the public informed of the importance of clean water and how the management of civil and natural resources affects the quality of streams in the county.

The members of CCPaSEC are divided into teams of three to five members to monitor streams in the county's five main watersheds, measuring temperature, stream flow, pH, alkalinity, nitrates, dissolved oxygen, sulfates, and conductivity monthly. Twice a year macro invertebrate counts are made. Data from each of the sites is posted on CCPaSEC's website. CCPaSEC's active schedule and interesting procedures have drawn members of various backgrounds into a close-knit group.

Members meet monthly for training, quality control instruction, data analysis, and to explore cooperative projects with ClearWater Conservancy, the Centre County Conservation District, and the PA Department of Environmental Protection. For further information, call the office of ClearWater Conservancy.

**Centre County Recreation & Greenway**

Planning and Community Development Office  
420 Holmes Street, Room 340  
Bellefonte, PA 16823  
814-355-6791

[www.co.centre.pa.us/planning/cultural/greenway/](http://www.co.centre.pa.us/planning/cultural/greenway/)

~ ~ ~ ~

Centre County is currently developing its first Countywide Recreation and Greenway Plan. This plan will inventory existing resources and prioritize opportunities for furthering the goal of a countywide network of interconnecting greenways, trails and parks. The County, municipalities, and other recreation stakeholders will be able to refer to this plan for guidance during future recreation and greenway planning initiatives.



**Pennsylvania Native Plant Society**

PO Box 807  
Boalsburg, PA 16827  
[www.pawildflower.org](http://www.pawildflower.org)



~ ~ ~ ~

The Pennsylvania Native Plant Society is a 501c.3 educational non-profit organization dedicated to increasing the understanding and appreciation of native plants and encourages conservation efforts. PNPS conducts educational field trips which are open to nonmembers, publishes a quarterly newsletter, and hosts a native plant sale each May.

Their annual meeting is held in the last quarter of the year, featuring speakers on various topics as well as elections.



## Pennsylvania Federation of Sportsman's Clubs

2426 North Second Street  
Harrisburg, PA 17110  
717-232-3480  
e-mail: [info@pfsc.org](mailto:info@pfsc.org)

Centre County Chapter  
716 Valentine Street  
Bellefonte, PA 16823  
814-355-3291  
[www.pfsc.org](http://www.pfsc.org)



~ ~ ~ ~

The mission of the Pennsylvania Federation of Sportsmen's Club, Inc. is to provide a statewide, united voice for the concerns of all sportsmen and conservationists; to insure that their rights and interests are protected, and to protect and enhance the environment and our natural resources.

## Centre Region Parks & Recreation

Centre Region Parks & Recreation  
2643 Gateway Drive #1  
State College, PA 16801  
814-231-3071  
[www.crpr.org](http://www.crpr.org)

~ ~ ~ ~

Centre Region Parks and Recreation (CRPR) is an agency of the Centre Region Council of Governments, a voluntary association of municipalities in Centre County, PA, working together for the betterment of the region. CRPR maintains recreation areas totaling 783 acres at 51 sites throughout the Centre Region including Millbrook Marsh Nature Center, Thompson Woods Preserve and the Stan Yoder Preserve. CRPR prides itself on providing beautiful natural areas along with a wide variety of programs and events to promote awareness and appreciation of the environment of the Centre Region. Find out more about CRPR and Millbrook Marsh Nature Center at [www.crpr.org](http://www.crpr.org).



*Millbrook Marsh Nature Center*

## Chesapeake Bay Foundation

Pennsylvania State Office  
614 North Front Street, Suite G  
Harrisburg, PA 17101  
888-SAVEBAY or 717-234-5550  
www.savethebay.cbf.org



Pollution and other harmful activities degrade the Bay. The Chesapeake Bay Foundation (CBF) fights for strong and effective laws and regulations. CBF also works cooperatively with government, business, and citizens in partnerships to protect and restore the Bay. When necessary, we use legal means to force compliance with existing laws.

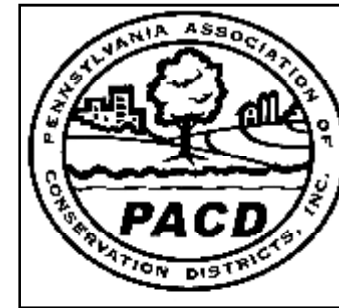
Since being created in 1967, we have achieved significant milestones to arrest the Bay system's decline and to begin to restore its health. From the landmark EPA study of the Chesapeake Bay in the 1970s to the first interstate Chesapeake Bay Agreement in 1983 to Maryland's historic sewage treatment bond bill in the 2004 and Virginia's comparable legislative commitment in 2005, CBF has been saving the Bay.

In Centre County, CBF works to Save the Bay through programs in environmental education and environmental protection and restoration.

**If you live in Centre County, you live  
in Chesapeake Bay Watershed.**

## Pennsylvania Association of Conservation Districts, Inc.

25 North Front Street  
Harrisburg, PA 17101  
717-238-PACD (7223)  
e-mail: [pacd@pacd.org](mailto:pacd@pacd.org)  
[www.pacd.org](http://www.pacd.org)



The Pennsylvania Association of Conservation Districts, Inc. is a non-profit organization that supports, enhances and promotes Pennsylvania's Conservation Districts and their programs.

The Pennsylvania Association of Conservation Districts, Inc. works with citizens, businesses, industry and governments to ensure a stable natural resource base. You can become involved and help provide statewide conservation leadership.

**Pennsylvania Association for Sustainable Agriculture**

P.O. Box 419 / 114 West Main Street  
Millheim, PA 16854  
Phone: 814-349-9856  
e-mail: [info@pasafarming.org](mailto:info@pasafarming.org)  
[www.pasafarming.org](http://www.pasafarming.org)



~ ~ ~ ~

*Promoting profitable farms that produce healthy food for all people while respecting the natural environment.*

The Pennsylvania Association for Sustainable Agriculture (PASA) is a nonprofit organization working to improve economic and social prosperity of Pennsylvania food and agriculture. Local food systems are key to successful farms, healthy food, and respect for the natural environment. PASA works with farmers and consumers to ensure a sustainable food system for all.

**ClearWater Conservancy**

2555 North Atherton Street  
State College, PA 16803  
814-237-0400  
e-mail: [contactus@clearwaterconservancy.org](mailto:contactus@clearwaterconservancy.org)  
[www.clearwaterconservancy.org](http://www.clearwaterconservancy.org)



~ ~ ~ ~

“Everyone Working Together to Conserve Natural Beauty and the Environment in the Heart of Pennsylvania”

ClearWater Conservancy of Central Pennsylvania, Inc. is a land trust and natural resource conservation organization formed in 1980. Our mission is to promote conservation and restoration of natural resources in central Pennsylvania through land conservation, water resources protection, and environmental outreach to the community. ClearWater’s Conservation Action Plan for the Nittany Valley guides their work. The Conservation Targets identified for the Nittany Valley through this plan include:

- Barrens plant communities
- Valley bottom mesic forests
- Subterranean ecosystems
- Limestone cliffs and glades
- Ridge tops and slopes
- Limestone springs, streams, wetlands, and floodplains in both Spring Creek and Spruce Creek
- Mountain saddles, water gaps, and freestone streams
- Vernal pools

## The Conservation Fund---PA Office

105 N. Front Street, Suite 400  
Harrisburg, PA 17101  
717-230-8166

[www.conservationfund.org](http://www.conservationfund.org)



~ ~ ~ ~

### Who We Are

America's Partner in Conservation

The Conservation Fund is dedicated to advancing America's land and water legacy. With our partners, we conserve land, train leaders and invest in conservation at home. Since 1985, we have helped protect more than 6 million acres, sustaining wild havens, working lands and vibrant communities.

We treat conservation as our business -- fulfilling our partners' conservation priorities, leveraging charitable donations for maximum impact and forging solutions that work economically and environmentally. Effective and efficient, we are consistently recognized as one of the nation's top environmental organizations by two charity watchdog organizations: American Institute of Philanthropy and Charity Navigator.

## Penns Valley Conservation Association

P.O. Box 165  
Aaronsburg, PA 16820  
e-mail: [info@pennsvalley.net](mailto:info@pennsvalley.net)  
[www.pennsvalley.net](http://www.pennsvalley.net)



~ ~ ~ ~

PVCA serves as a steward of the Upper Penns Creek watershed and all its communities. We work to protect and conserve Penns Valley's waters, farmlands, forests, and the heritage upon which its vibrant rural quality of life depends. We do this by organizing and supporting activities that promote healthy natural systems and foster local economies.

The PVCA Board meets the second Wednesday of the month in Millheim. The group holds four (4) public meetings a year at various locations in the watershed.

**The Penn State Chapter of the Wildlife Society**

814-865-4511

[www.clubs.psu.edu/up/wildlifesociety](http://www.clubs.psu.edu/up/wildlifesociety)



~ ~ ~ ~

The Penn State student chapter of the Wildlife Society is a national recognized chapter of the professional society and welcomes all students interested in wildlife and the environment. The society sponsors field trips and work projects to areas of interest as well as meetings featuring guest speakers who discuss various aspects of wildlife, biology, conservation and management. Each year the society participates in the “Conclave”, a three day competition between student chapters of many northeastern universities.

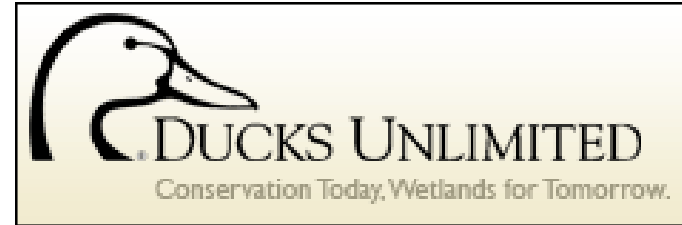
**Ducks Unlimited**

2129 Old Lancaster Pike

Reinholds, PA 17569

800-872-9213

[www.ducks.org](http://www.ducks.org)



~ ~ ~ ~

**Vision & Mission**

The vision of Ducks Unlimited is wetlands sufficient to fill the skies with waterfowl today, tomorrow and forever.

**Singleness of Purpose - Our Mission**

Ducks Unlimited conserves, restores and manages wetlands and associated habitats for North America's waterfowl. These habitats also benefit other wildlife and people.

**Eco-Action**

313 HUB-Robeson Cultural Center  
Penn State University  
University Park, PA 16804  
814-883-6861  
www.clubs.psu.edu/up/ecoaction/



Eco-Action is a student group that incorporates environmental activities into our society through public education on the subject of conservation of nature and through organizing environmental projects of long term duration, providing lasting benefits.

Each year on Earth Day, Eco-Action sponsors activities on the HUB lawn.



**Nittany Valley Longbeards/  
National Wild Turkey Federation**

163 Clemens Lane  
Bellefonte, PA 16823  
814-353-1712  
www.nwtf.org



The National Wild Turkey Federation is a 390,000 member grassroots, nonprofit organization with members in 50 states, Canada and 11 foreign countries. It supports scientific wildlife management on public, private and corporate lands as well as wild turkey hunting as a traditional North American sport. The Centre County chapter calls itself the Nittany Valley Longbeards.

## **Nittany Grotto**

P.O. Box 676  
State College, PA 16804  
[www.clubs.psu.edu/up/nittanygrotto](http://www.clubs.psu.edu/up/nittanygrotto)

~ ~ ~ ~

The Nittany Grotto is a caving group based in Centre County Pennsylvania. They meet at Penn State University and are a student run group with non student members. They sponsor projects related to the conservation, discovery, exploration, survey, and mapping of caves.



### **Mission Statement**

The Nittany Grotto promotes interest in and advances the study and science of speleology, and promotes the activities of the National Speleological Society (NSS) in the Central Pennsylvania Area.

## **Headwaters Resource Conservation and Development Council**

478 Jeffers Street, Bldg. 3, Suite D  
Dubois, PA 15801-2438  
814-375-1372 ext. 4  
[www.parc.d.org/headwaters.htm](http://www.parc.d.org/headwaters.htm)

~ ~ ~ ~

### **Vision Statement**

We will serve, support, and promote Resource Conservation and Development Councils by nurturing partnerships and by providing innovative and dynamic leadership. The result will be an excellent quality of life in Pennsylvania and a strengthened ability to be responsible for the environment.





**Keystone Trails Association**

101 North Front Street, 3rd Floor  
Harrisburg, PA 17101  
717-238-7017  
www.kta-hike.org/



Keystone Trails Association, a volunteer-directed, public service organization is a federation of membership organizations and individuals dedicated to providing, preserving, protecting and promoting recreational hiking trails and hiking opportunities in Pennsylvania, and to representing and advocating the interests and concerns of the Pennsylvania hiking community.

A "keystone" is the central wedge-shaped stone of an arch, the stone that holds the entire arch together. Since the 1800s, Pennsylvania has been known as the Keystone State in tribute to its importance to the original colonies. Keystone Trails Association is that important to the state's hiking trails.

KTA protects hiking trail lands through support and advocacy and educates the public in the responsible use of trails and the natural environment. Through the quarterly newsletter and this website, members and hikers are kept informed about hiking-related activities in and around Pennsylvania. It is our hope that this website will give you the needed information to plan and hike the many fine trails of Pennsylvania.

Join us on our hiking weekends, at trail care, our workshop and training seminars and at our Spring hiking and council meeting in Coudersport and Fall hiking and annual meeting in Marienville and see what KTA is all about.

**The Nature Conservancy  
Pennsylvania Chapter**

2101 N. Front St.  
Building #1, Suite 200  
Harrisburg, PA 17110  
<http://www.nature.org>

Membership inquiries, or to make a gift contact our Conshohocken office  
800-75-NATURE or 610-834-1323  
All other inquiries,  
contact our Harrisburg office  
866-298-1267 or 717-232-6001



The mission of The Nature Conservancy is to preserve the plants, animals and natural communities that represent the diversity of life on Earth by protecting the lands and waters they need to survive.





## Mount Nittany Conservancy

P.O. Box 296  
State College, PA 16804  
814-237-0440  
e-mail: [Info@MtNittany.org](mailto:Info@MtNittany.org)  
[www.mtnittany.org](http://www.mtnittany.org)



*Photo by: Doug Bauman*

~ ~ ~ ~

The Mount Nittany Conservancy (MNC) is a nonprofit organization whose mission is to acquire and conserve lands on and around Mt. Nittany, a symbol of Penn State and the source of its legends. To benefit the public, MNC practices conservation, protection, and management of these lands as historic, scenic, recreational and environmental resources.

In 1945, the Lion's Paw Alumni Association saved 525 acres from lumbering and other desecration through a fund-raising campaign among its few hundred members. But encroachment continued. In 1981, the Association formed the Mount Nittany Conservancy (MNC) to acquire additional land. With community and alumni support, the Conservancy has obtained through purchase or donation over 300 acres that faced possible use for commercial or residential purposes.

## League of Women Voters

226 Forster Street  
Harrisburg, PA 17012  
717-234-1576  
e-mail: [infopa@palwv.org](mailto:infopa@palwv.org)  
[www.palwv.org/](http://www.palwv.org/)

### Centre County Office

PO Box 962  
State College, PA 16804  
e-mail: [Dannaker13@aol.com](mailto:Dannaker13@aol.com)  
814-355-7577



~ ~ ~ ~

The League of Women Voters, a nonpartisan political organization, encourages the informed and active participation of citizens in government, works to increase understanding of major public policy issues, and influences public policy through education and advocacy.

The local chapter sponsors educational forums about environmental issues.

## Lumber Heritage Region of PA, Inc.

Cameron County Courthouse  
20 East 5th Street  
Emporium, PA 15834  
814-486-0213  
www.lumberheritage.org/

~ ~ ~ ~

The Lumber Heritage Region is one of Pennsylvania's twelve Heritage Regions. A grassroots effort to tell the great stories of the lumbering era; to share the vast wealth of natural, cultural and historic resources in the 15 county Region and to educate visitors and residents alike about the importance of the sustainable forest practices of today's lumber industry.



## Moshannon Creek Watershed Coalition

P.O. Box 4  
Osceola Mills, PA 16666  
www.moshannoncreek.org



~ ~ ~ ~

The mission of the Moshannon Creek Watershed Coalition is to improve and maintain the social, recreational, economic, and ecological quality of the Moshannon Creek Watershed for future generations.

They hope to:

- reclaim abandoned mine lands;
- treat and / or eliminate mine drainage;
- address other identified water quality and watershed issues;
- restore impacted stream channels and wetlands; promote judicious and sustainable land use and management;
- protect and enhance open space and natural areas;
- promote public awareness through public outreach and education;
- promote partnerships with community groups, with industry, and with organizations who share our vision.

This group meets on the fourth Tuesday of every month at the Rush Township Building in Philipsburg at 7:00 p.m.